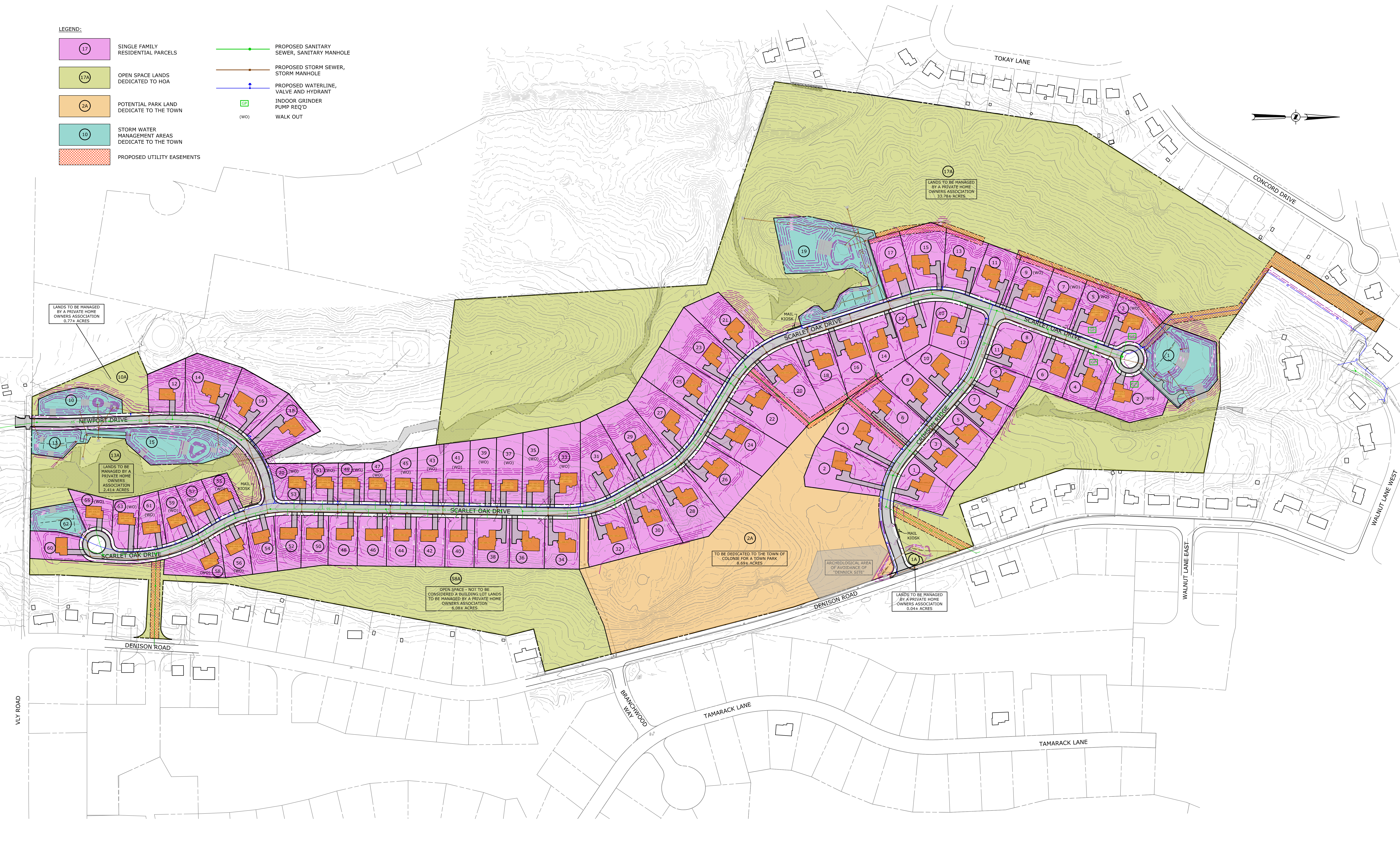


LEGEND:

- 17 SINGLE FAMILY RESIDENTIAL PARCELS
- 17A OPEN SPACE LANDS DEDICATED TO HOA
- 2A POTENTIAL PARK LAND DEDICATE TO THE TOWN
- 10 STORM WATER MANAGEMENT AREAS DEDICATE TO THE TOWN
- PROPOSED UTILITY EASEMENTS
- PROPOSED SANITARY SEWER, SANITARY MANHOLE
- PROPOSED STORM SEWER, STORM MANHOLE
- PROPOSED WATERLINE, VALVE AND HYDRANT
- INDOOR GRINDER PUMP REQ'D
- WALK OUT (WO)



C.T. MALE ASSOCIATES
 Engineering, Surveying, Architecture, Landscape Architecture & Geology, D.P.C.
 50 CENTURY HILL DRIVE, LATHAM, NY 12110 PH: 518.786.7400
 GLENS FALLS, NY • JOHNSTOWN, NY • POUUGHKEEPSIE, NY • SYRACUSE, NY
 www.ctmale.com

OVERALL SUBDIVISION PLAN
RIDGWOOD SUBDIVISION
34 DENISON ROAD

PROJ. NO.: 17.7174 DRAFTED: MAC SCALE: 1"=100' DATE: SEPT. 23, 2024 TOWN OF COLONIE ALBANY COUNTY, NEW YORK